



From the
developers
of
Spencer's
Landing!

\$ 1 4 9 , 9 0 0





From the developers of Spencer's Landing, introducing Fisherman's Cove, a new subdivision located at Howard Lane and Fisherman's Cove Road on the south end of Station Street. Build your beach retreat here! Lot 15 is one of the lowest priced residential lots on the beach side of Alister that allows short term rentals!! Don't miss the boat on this great investment opportunity!!!

Selling Port A Everyday Since 1972



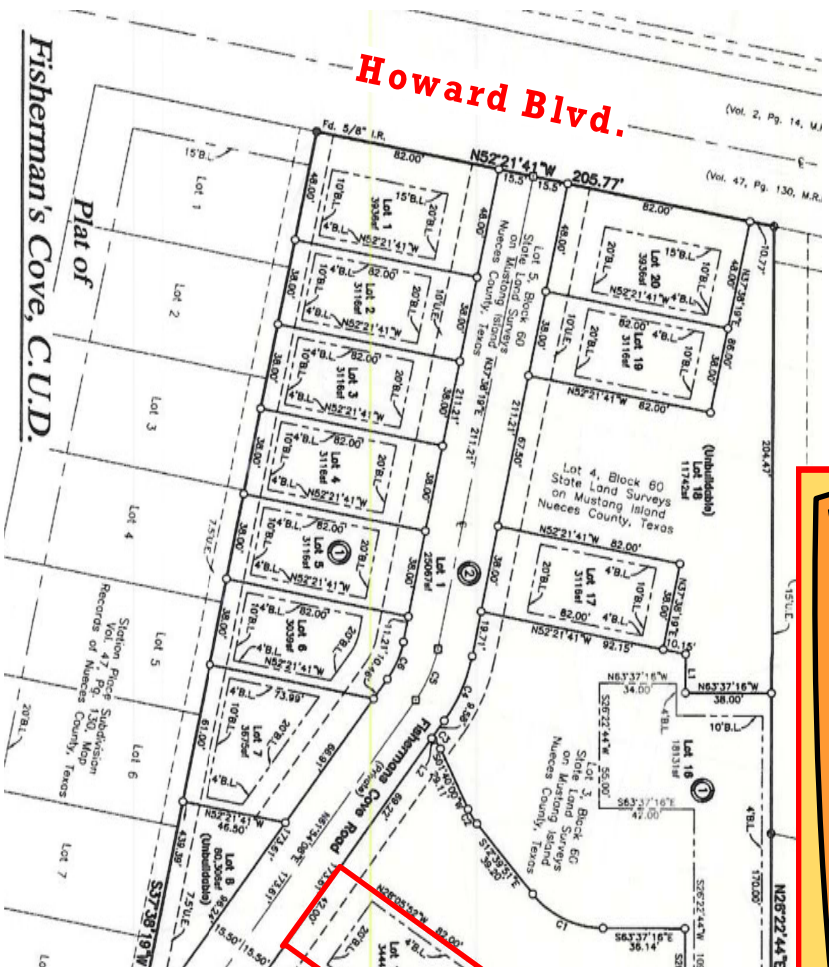
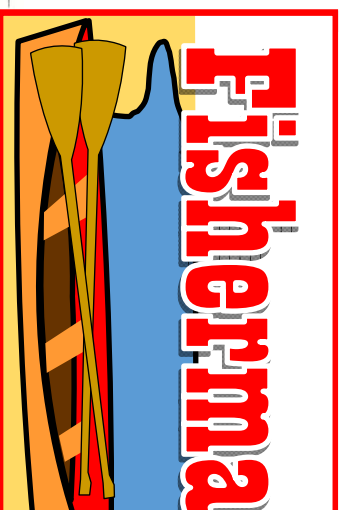
Port Aransas. We know it. We ♥ it.

155 West Cotter Avenue, Port Aransas, Texas 78373

361-749-6603 • www.WeSellPortA.com

© 2019 Mark Grosse Real Estate Brokerage

This information is believed to be accurate at time of printing but cannot be guaranteed. Price, taxes, square footage, fees & availability are subject to change & cannot be guaranteed



Selling Port A Everyday Since 1972

155 West Cottage

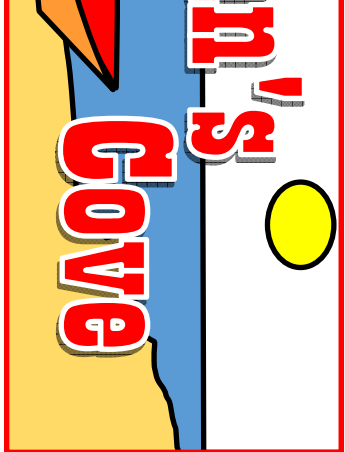
Mark Grosse
 Real Estate Brokerage

Port Aransas. We know it. We ♥ it.

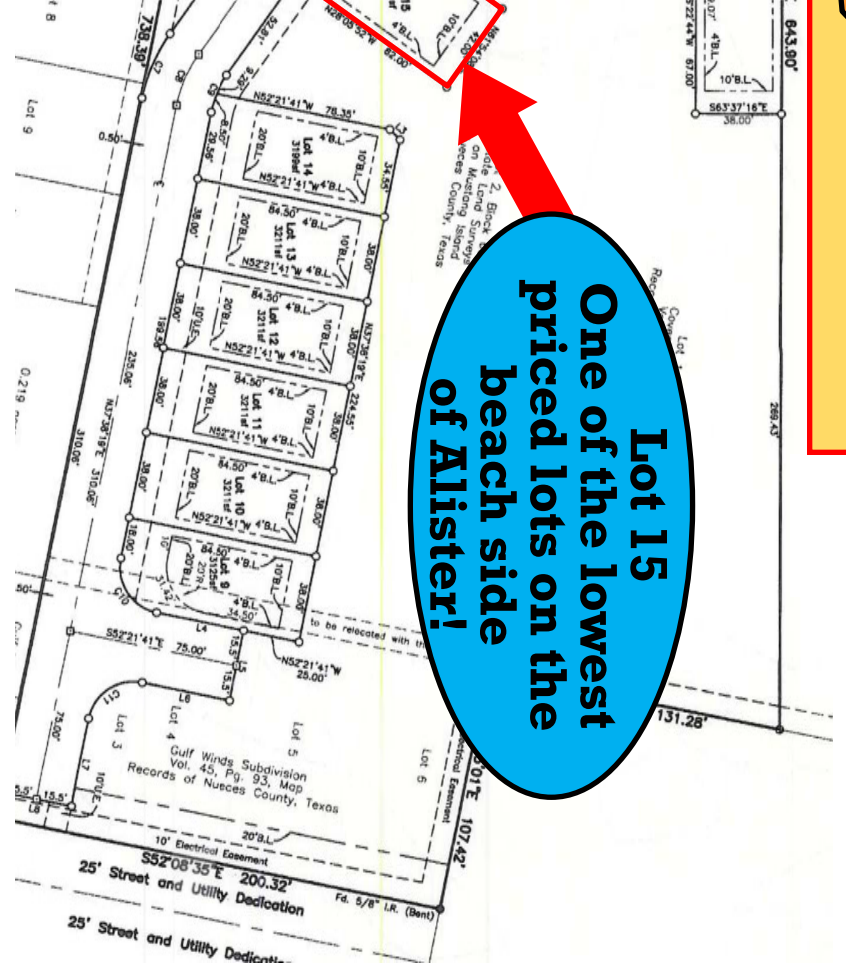
This information is believed to be accurate. Price, taxes, square footage, etc. are subject to change without notice.

361-749-4444

© 2024



Lot 15
One of the lowest
priced lots on the
beach side
of Alister!



78373 Avenue, Port Aransas, Texas 78373

66603 • www.WesellPorta.com

019 Mark Grosse Real Estate Brokerage

**ed to be accurate at time of printing but cannot be guaranteed.
fees & availability are subject to change & cannot be guaranteed**